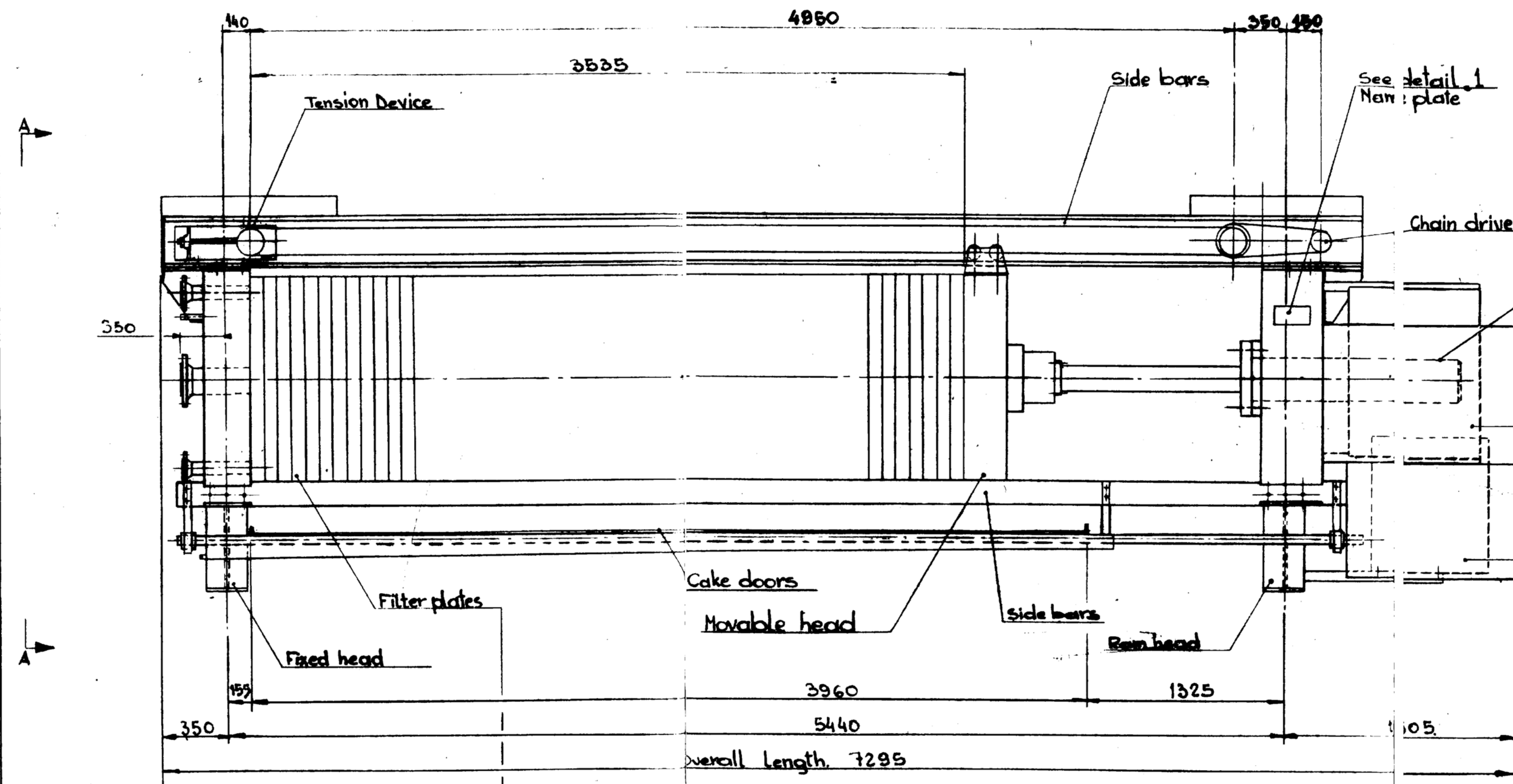


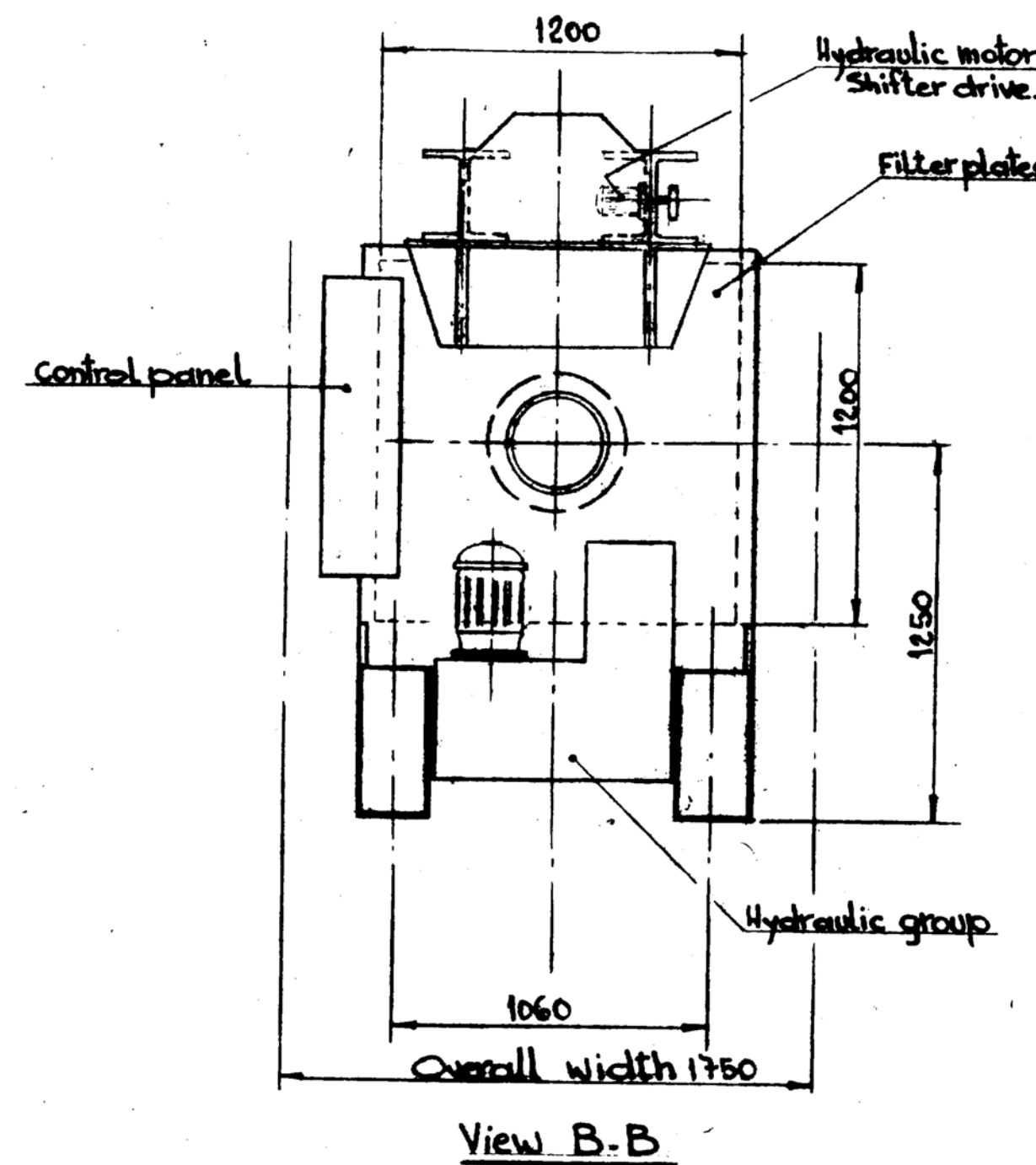
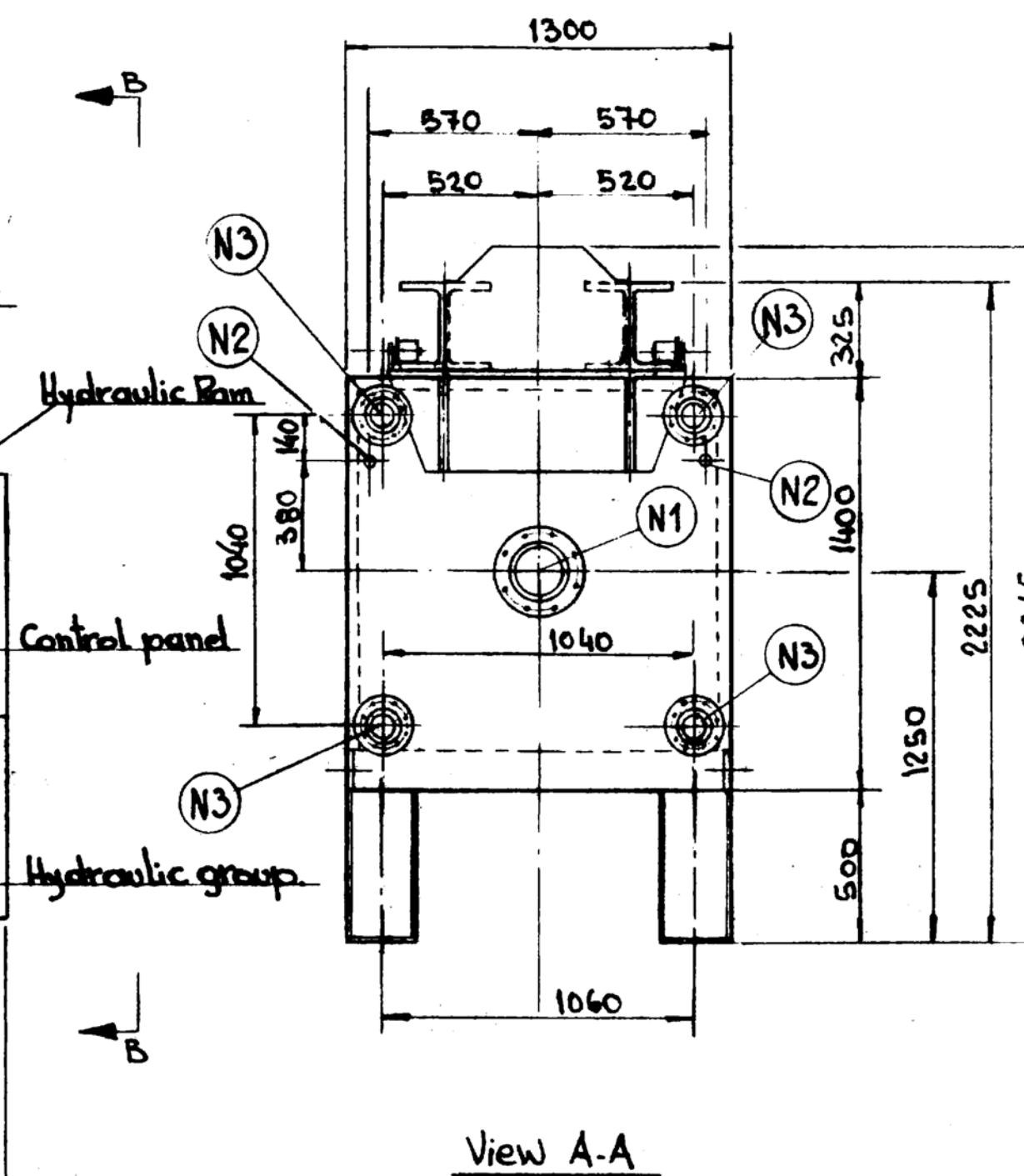
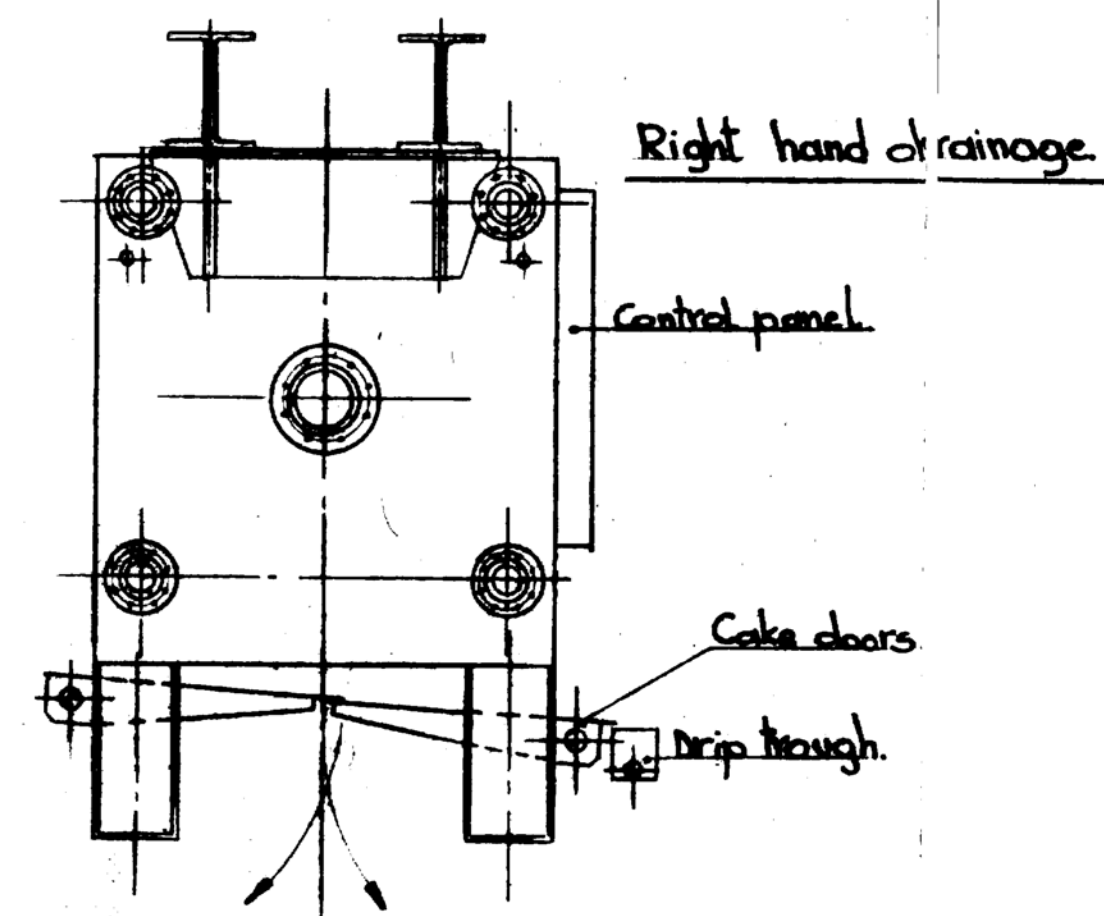
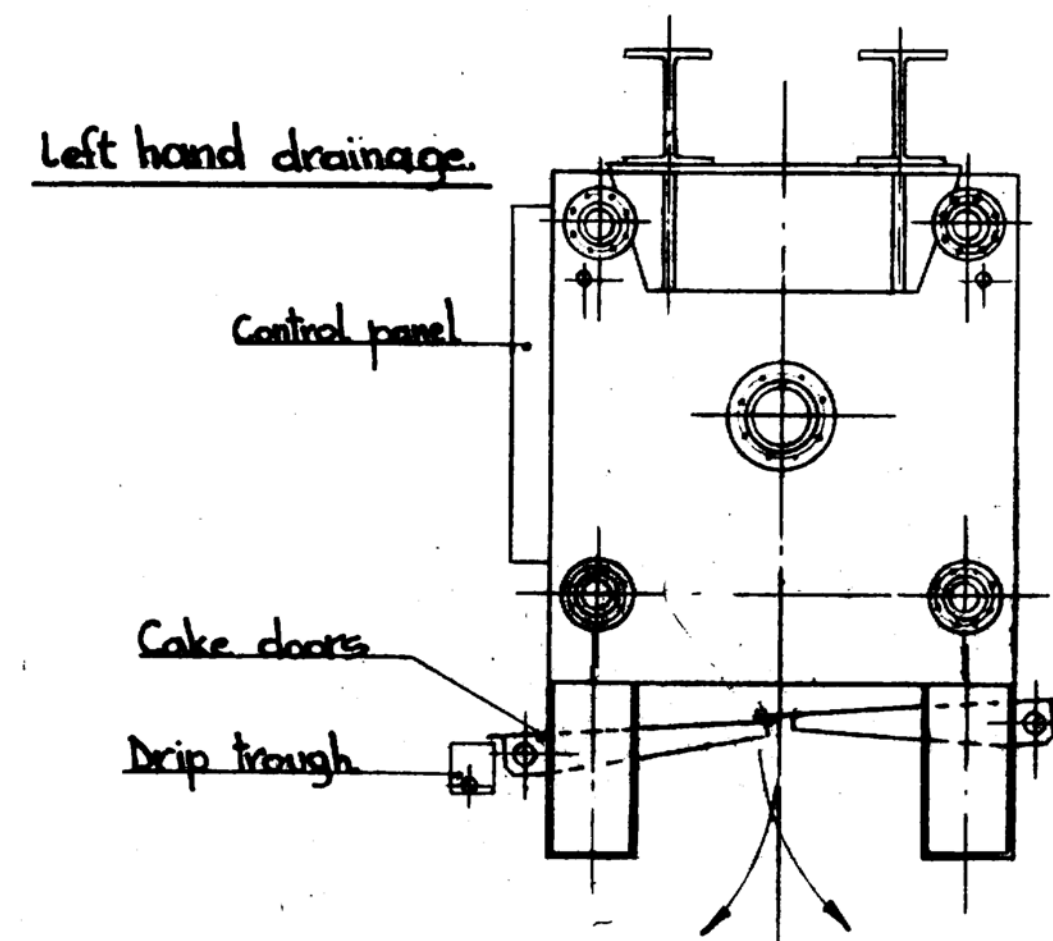
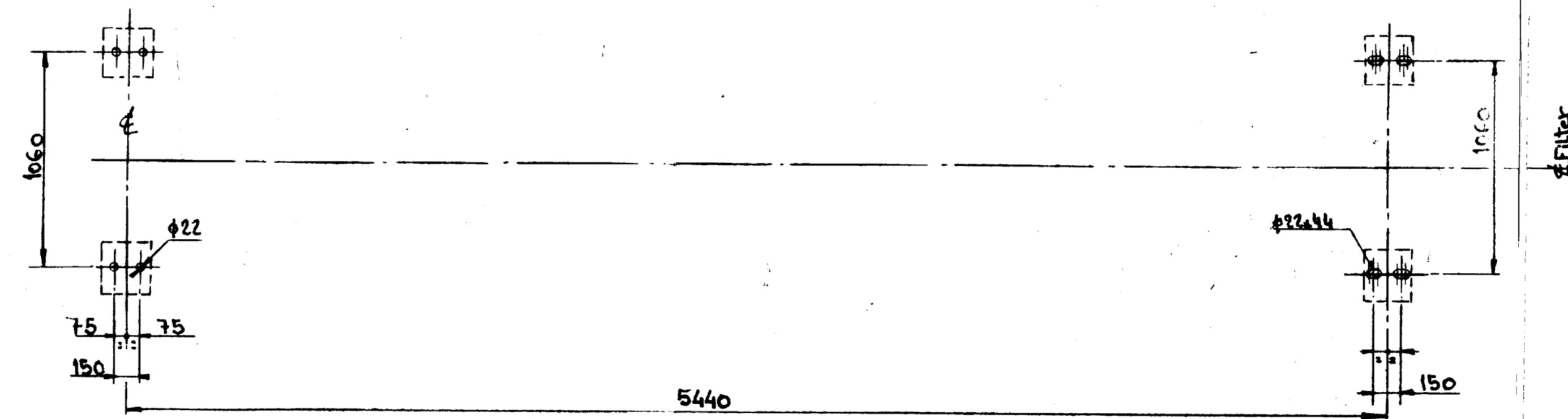
Front View.



Centerfeed.

- | |
|----------------|
| 1. Head plate |
| 1. Tail plate |
| 1. Blank plate |

Thn: 80 mm.
Thn: 80 mm.
Thn: 60 mm.

**WELDERS N.V.**

INDUSTRIETERREIN • WIJNGAARDVELD •
AALST - BELGIUM

MANUF. SERIAL. NO. 81.630 OPERATING. PRESS
YEAR BUILT. 1984 HYDRAU. TEST. PRESS

Detail. Nameplate.

Filter Specification

Model-type : OMF. 1200

- Skeleton : Steel
- Protection : Paint. Ral. 20.03 and 70.32.
- Drip trays : AISI 304.
- Hydraulic system
- Ram Length : 900 mm
- Power : - 5,5 kW.
- 440 V - 3 Ph- 50Hz.
- Protection IP54 TEFC.

Plate type : Lamber. Membranes Chamberplates
Filter element size : 1200x1200
Cake thickness : 50 mm.
Number of chambers : 40
Filtration pressure inlet: Max: 4 bar
Filtrate pressure: Minimal.
wash pressure:

Wash temperature: _____
Squeezing pressure: _____
Squeezing temperature: _____
Material at liquid points: Polyprop. and S.S. A161304.
Design pressure: 7 bar (skeleton)
Design temperature: 100°C (skeleton)
Filter press capacity: 2120 liters.
Filter press filter area: 93.5 sq.m.
Automatization: Liquid phase: fully
solid phase: fully
Filter cloth type: Mono: _____

| | | | | | | | |
|------|------|-----|-----------------|------|-----------|------------------|---------|
| N3 | 4 | 3" | φ88, 3, 3.2 | ASA | 150" | Filtrate outlet | |
| N2 | 2 | 1"G | Coupling. | | / | Air to membranes | |
| N1 | 1 | 6" | φ168, 3/4.5 | ASA | 150" | Inlet. | |
| Work | Numb | N.D | Dia. x Tsk Neck | Type | FN Flange | Service | Remarks |

— Nozzle Schedule —

| | |
|-------------------------------|---------|
| N.V. Extraction De Smet. S.A. | Seprod. |
|-------------------------------|---------|

WELDERS N. V.

Industrieterrein «Wijngaardveld»
9300 AALST - BELGIË

Fully automatic filterpress
OMF - Model. 1200

| |
|------------------|
| Vervangt : |
| Vervangen door : |

Wheel: 1/20
Lat: JDC
Return: 27-12-84

Wijzigingen :

PLANNING

F1200/062

Headlines